



Inductive Sensors Series 60 - AC/DC

Housing $\varnothing = 40 \text{ mm}$

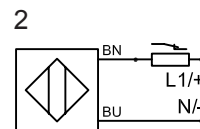
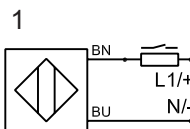
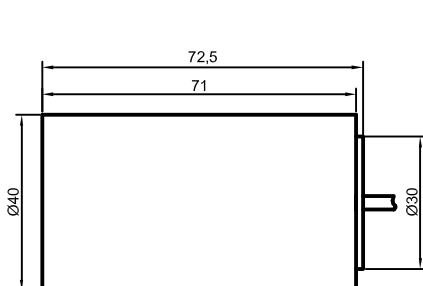
- Housing material: PA
- Flush mountable
- Sensing distance $S_n = 20 \text{ mm}$

Certificate:



Technical data

Operating distance S_n [mm], flush Mounting	20, yes	20, yes
Electrical version	2-wire AC/DC	2-wire AC/DC
Output	NO	NC
Type	IAS-60-40-S	IAS-60-40-Ö
Art.-No.	620 900	621 100
Connection diagram No.	1	2
Operating voltage (U_b)	20...250 V AC/DC	20...250 V AC/DC
Output current max. (I_e)	300 mA	300 mA
Minimum load	typ. 9 mA	typ. 9 mA
Voltage drop max. (U_d)	typ. 6 V	typ. 6 V
Permitted residual ripple max.	-	-
No-load current (I_0)	typ. 3.5 mA	typ. 3.5 mA
Frequency of operating cycles max.	25 Hz	25 Hz
Permitted ambient temperature	-25...+70°C	-25...+70°C
LED-display	yellow	yellow
Protective circuit	built-in	built-in
Degree of protection IEC 529	IP 67	IP 67
Connection cable	2 m 2 x 0.75 mm ²	2 m 2 x 0.75 mm ²
Housing material	PA	PA
Active surface	PA	PA
Lid	PA	PA



All specifications are subject to change without notice. (11/2003)